

## Larger SD cards with MMI 3G High/Plus



### Disclaimer

This document is provided to you for **free**, feel free to learn and benefit from it. At no stage I take responsibility of your actions or any of my notes that may mislead you. Therefore, and like my all other documents I say “**use at your own risk**”.



**Caution:** Use this guide at your own risk, we are not responsible



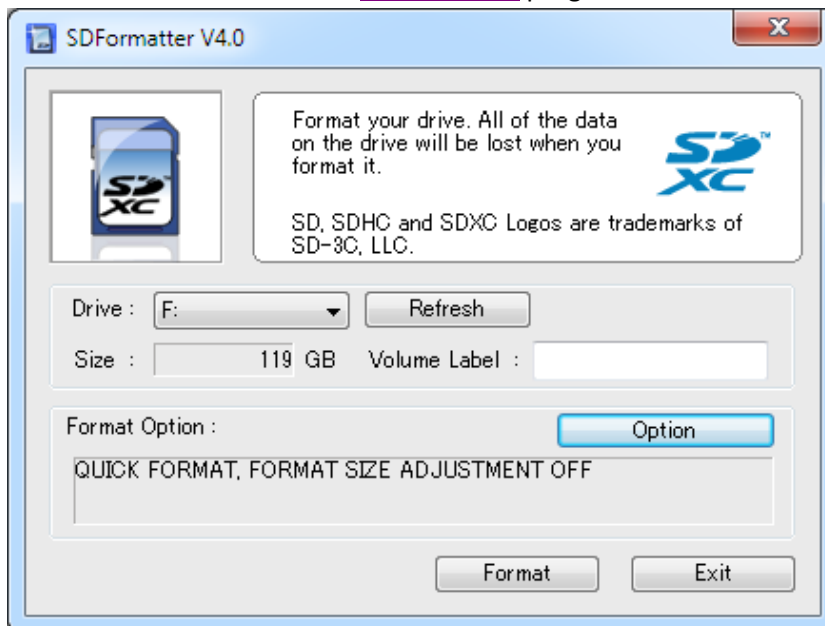
**Warning:** Although it's possible to use SD cards bigger than 32GB I do recommend using 2/4GB card for the software upgrades to avoid any damage to the MMI because of wrong/corrupted blocks.

## Use SD cards bigger than 32GB with Audi MMI 3G High/Plus

By Congo – written Q1 2016 – Version 1

Since SD cards larger than 32 GB, by default are formatted to exFAT format that MMI does not understand, it is necessary to format the SD card with third-party programs, as follows:

1. Format the card in exFat with [SD Formatter](#) program



2. Format the card to FAT32 format using [guiformat 32Bit](#) or [guiformat 64Bit](#)

